

# EXHIBITOR BRIEFING

# NCC

N.C.C. Management & Development Co., Ltd.  
60 Queen Sirikit National Convention Center, Ratchadaphisek Road,  
Klongtoey Sub-District, Klongtoey District, Bangkok 10110, Thailand  
Tel : +66 (0) 2229 3000 Fax : +66 (0) 2229 3001 Website : [www.qsncc.com](http://www.qsncc.com)



# **TOPICS**

- **Booth Packages**
- **Our Services**
  - Furniture and Miscellaneous Stand Item
  - Electrical and Water Items
  - Inkjet Services
- **Rules and Regulation**
- **Safety Measurement**



# Booth Package : Premium Booth



# Rules and Regulation for Exhibitors

**Do not** move, make any addition or any change to the Standard shell scheme. Should you wish to do so, please contact the operation staff of NCC for further action.

**Do not** spray glue, glue or silicone on the wall panel.

**Do not** paint, spray-paint, or write on the wall pane.

**Do not** drill, nail, perforate, tack down, staple or cause any damage to the panel or any parts of the standard shell scheme. Should you need to affix any exhibit or sign to the wall please contact our Operation staff.

*In case of violation of the above rules, NCC in the capacity of official contractor, will be obliged to request the payment from exhibitor for any damage caused at the rate of **3,000 Baht/panel.***

Thank you and look forward to your full co-operation.

**Remark : The Socket ,which given in the stand is not allow to use with any lighting.**



# Electrical Rules and Regulation

N.C.C. has often encountered numerous short circuit problems causing danger to exhibitors and visitors mainly due to the installation of equipment that is not regulated by exhibitors or contractors, such as illegal connection or equipment adaptation, therefore, all electrical installation works must be carried out by applying the following rules:

1. All electrical installation must conform strictly to the required TISI standard (in Thailand) without any exception.
2. There are two main power supply circuits;
  - For Exhibit and...
  - For Lighting

It is forbidden to misuse the power supply as follows.



# Electrical Rules and Regulation

- ✓ Orders under Section B: Socket/Breaker for Exhibits are allowed for devices such as machinery, engine, TV, Laptop charger, etc. and not allowed to apply for all Lighting equipment such as spotlight, LED Ribbon, etc.



: Socket 5 Amp as the organizer provide you in shell scheme booth

(Not allow to use with lighting) The power consumption for socket 5 Amp is 1,000 Watt

Do not use with devices that exceed the power rating and



Do not use with lighting



# Electrical Rules and Regulation

3. The standard electrical supply is 110V, 220V, or 380V with approximately 10 percent fluctuation.
4. For all electrical usage, it is mandatory to calculate the circuit load with a 20 percent safety margin.
5. It is prohibited for power supply, water, and compressed air wiring equipment to be installed crossing any aisle in the exhibition for safety reasons and not to obstruct traffic for all exhibitors, visitors, and other contractors.
6. A 3-Phase circuit breaker is required to connect directly with machinery or engine, otherwise, a load center will be required if multi-connection is needed.



**Load Center for 3 Phase**



**Ring Terminals**



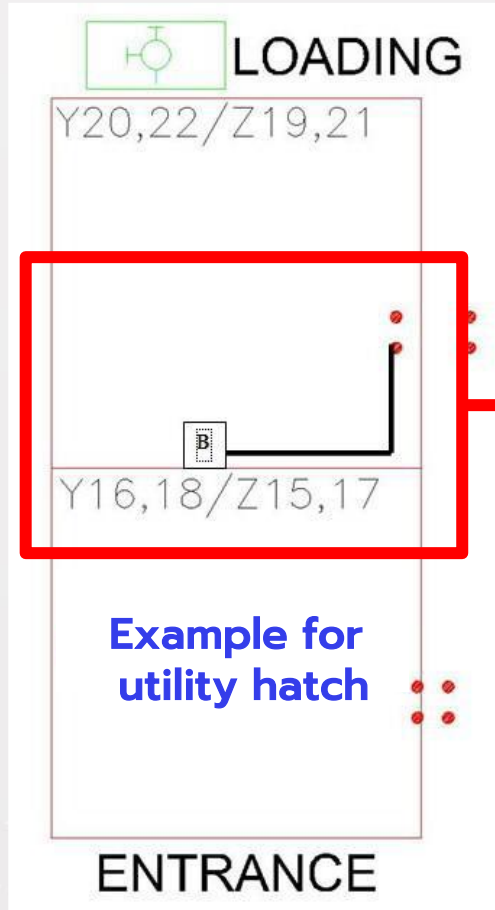
**Double insulated wire (VCT)**

If you have any feather you can contact us at counter servicer



# Electrical Rules and Regulation

## Utility Hatch



Utility Hatch is the position for wire cable of a main power, water, and compressed air

Exhibitor must to indicate utility hatch close to the position as you would like to use and you have to indicate within your stand

The cable of a main power, water, and compressed air supply from the utility hatch, is provided at 2-meters long from utility hatch follow as your requirement.

### Example for utility hatch

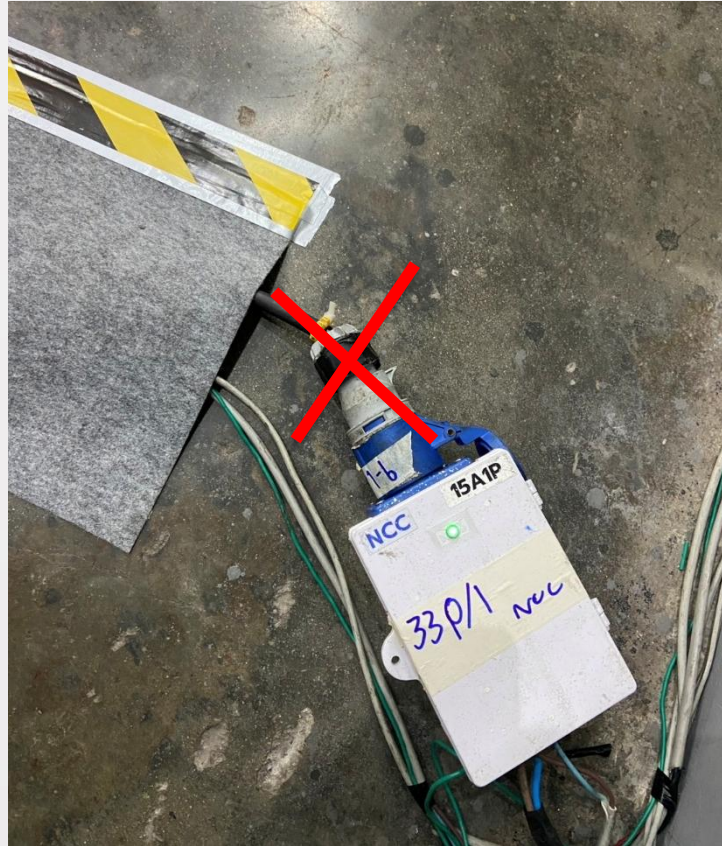


\*\*An extension of the length or any relocation are subjected to a surcharge following the price for each equipment.



# Electrical Rules and Regulation

## Main Power Supply



Please do not disconnect  
POWER PLUG from breaker box!!!

**Example for  
Main power supply**





THAIBEV @ THAIFEX 2018

KONICA MINOLTA @ LABEL EXPO 2018



NUTRIMED

ธนชาต DRIVE @ MOTOR EXPO 2019



# SPECIAL DESIGN

**NCC**

N.C.C. Management & Development Co., Ltd.  
60 Queen Sirikit National Convention Center, Ratchadaphisek Road,  
Klongtoey Sub-District, Klongtoey District, Bangkok 10110, Thailand  
Tel : +66 (0) 2229 3000 Fax : +66 (0) 2229 3001 Website : www.qsncc.com





KENWOOD @MOTOR EXPO

60+ PROJECT @THAIFEX 2019

# SPECIAL DESIGN



คปภ. @ THAILAND INSURANCE  
EXPO 2019



EGAT @IEEE 2019





Speed



Service



Smile

# NCC

N.C.C. Management & Development Co., Ltd.  
60 Queen Sirikit National Convention Center, Ratchadaphisek Road,  
Klongtoey Sub-District, Klongtoey District, Bangkok 10110, Thailand  
Tel : +66 (0) 2229 3000 Fax : +66 (0) 2229 3001 Website : [www.qsncc.com](http://www.qsncc.com)



# THANK YOU